



**DCP CONCRETE ADMIXTURES: TECHNOLOGY,
SOLUTIONS AND PRODUCTS**

About DCP




Don Construction Products (DCP) has accumulated over 90 years of experience in developing, manufacturing and marketing innovative construction materials. DCP has operations in North America, Europe, Africa, Middle East and Asia, with 14 manufacturing locations, and a distribution network to over 30 countries.

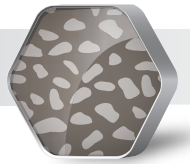


DCP Timeline

- 1927 Established in Doncaster, UK as Akis Chemicals.
- 1928 Merged with Francois Chemicals.
- 1986 Management buyout and the company rebranded as Don Construction Chemicals.
- 1997 F. Ball and Co. Ltd., UK's leading manufacturer of flooring adhesives and floor preparation materials, acquired Don Construction Chemicals and renamed the company Don Construction Products (DCP).
- 2000 DCP acquired G.R.A.B. Resins of the UK, a 1995 F. Ball and Co. Ltd.
- 2005 DCP signed a license agreement with Ayla Construction Chemicals for the Middle East.
- 2010 DCP acquired Ayla Construction Chemicals, expanding its operations to include Europe, the Middle East and India.
- 2016 DCP acquired Everalac and Sports Coatings, a leading sport surfaces UK company.
- 2017 DCP expanded into North America.

DCP Commitments

-  **Expertise** DCP provides exceptional level of expertise and support services both at the office and on site.
-  **Quality** All products are produced to comply with the strictest relevant international standards as a base minimum and often goes above and beyond.
-  **Full Range** DCP offers a comprehensive range of products covering a wide range of civil and aesthetic requirements for construction projects.



Full Product Range

The focus of our full product range below caters to our 4 core business units: Concrete & Cement Technology, Underground Construction Technology, Construction Projects Materials Technology and Building Finishing Products.



Concrete Admixtures



Surface Treatments



Grouts & Anchors



Concrete Repair



Flooring Systems



Protective Coatings



Sealants & Joints



Waterproofing



Adhesives



Tile Adhesives & Grouts



Building Finishing Products



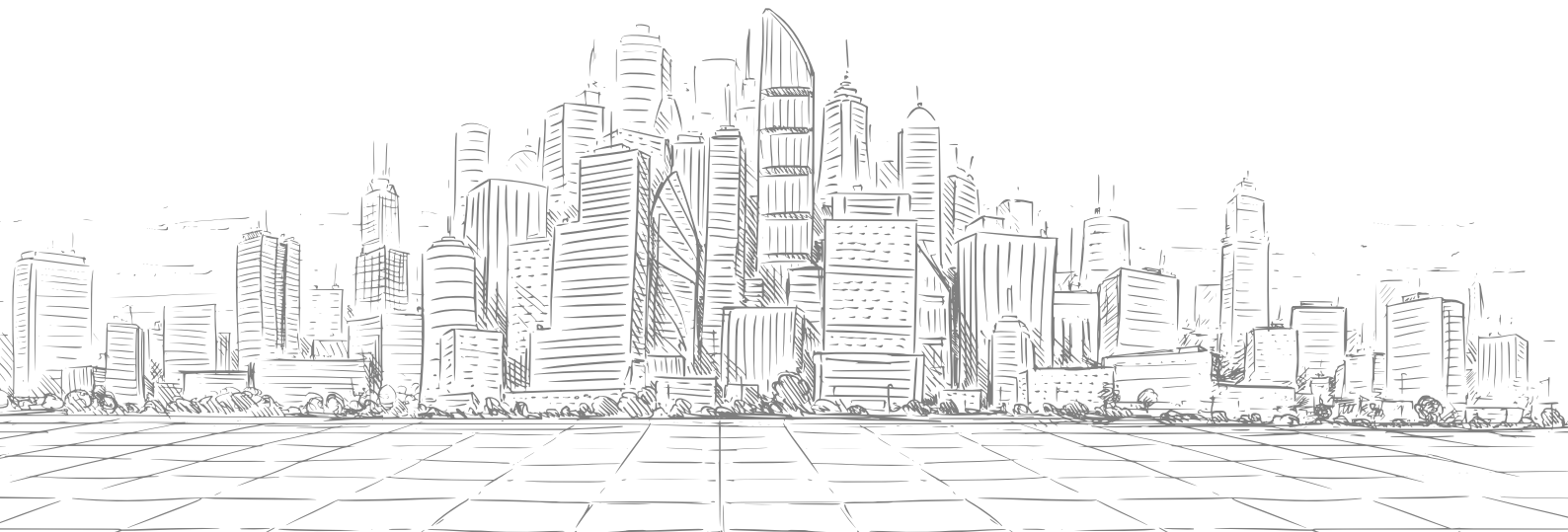
Structural Strengthening

DCP's HSE Commitment

- Takes every reasonably practicable step to prevent accidents, injuries and work related ill-health.
- Complies with, and exceeds standards set by all applicable legislation, adopted codes of practice and other requirements. Where none exist; adherence to the stringent standards based on DCP's best practices.
- Actively involves and encourages all employees in the achievement of DCP's objectives.
- Appoints competent people to assist in meeting statutory duties including external HSE performance.

DCP's Environment Commitment

Our commitment to the environment, including a low CO₂ footprint and low dust emissions, enables us to operate production close to residential areas where the most stringent environmental regulations exist. We commit unreservedly to this directive since these residential areas are our own homes and backyards.



Concrete Technology

DCP has a total production capacity of 1.6 million litres (0.42 million gallons) of concrete admixtures per day per shift, providing for the supply of approximately 0.31 million m³ (0.34 million yd³) of concrete produced daily.

In-House Innovation

Equipped with the latest technology and know-how in concrete admixture formulation, DCP's product range adds several advantages to improving concrete properties and durability, as well as introducing new applications for concrete.

Using the latest and innovative technology in its production facilities, DCP produces its own primary raw materials such as SNF and PC polymers used to produce the concrete admixtures. By having its own production facilities, DCP is able to focus on and promote innovation and collaboration to produce high quality products with the best formulations that meet our clients' needs.

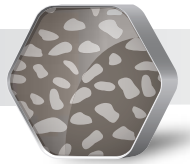


Selecting the right admixture is necessary for the success of any concrete producer

DCP has been providing intelligent concrete technology solutions since 1920 and has become a market leader in many construction fields, with a specialty in concrete admixtures for ready-mix, precast and manufactured concrete products.

In 2017 DCP expanded into North America and set up operations in North Carolina.





DCP Solutions for Ready-Mix, Precast and Manufactured Concrete Products

Ready-mix concrete is a tailor-made concrete that needs to be durable, stable, and easy-flowing or self-compacting. Ideally, this should be combined with an excellent surface finish and uniform concrete with a quality that exceeds standard specifications.



DCP precast admixtures are designed for the production of quality precast concrete with excellent self-compacting properties, reduced water-cement ratios and enhanced early age strengths.



Manufactured Concrete Products (MCP) are available in attractive designs and surfaces.

The main benefits of MCP products are that they:

- Serve a wide variety of structural and architectural applications.
- Reduce construction times and low production cost.



DCP aims to enhance its business process, using the latest developed technology around the world.



Normal Range Water Reducers (Flocrete Range)

Normal range water reducing admixture provides an effective and economical solution for reducing water-cement ratio in concrete mixes while maintaining very good slump and strength performance.



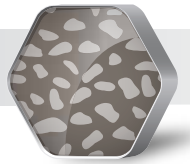
High Range Water Reducers (Hyperplast Range)

High range water reducing superplasticisers with extended slump retention characteristics that improve the properties of fresh and hardened concrete. This effect can be used to produce low viscosity, flowable and self-compacting concrete at low dosages while maintaining excellent strength and durability.



Concrete Block Admixtures (Hyperplast ES Range)

Premium quality high range water reducing admixture based on polycarboxylic polymers with selective additives which can significantly assist in the production of more uniform and consistent quality factory-line concrete productions such as concrete blocks and bricks.



Retarders (Flocrete R Range)

Retarding admixtures are used in concrete where high cement content or high temperatures are involved, or when extended setting time is required.



Set Accelerators & Antifreeze Admixtures (Flocrete Antifreeze Range)

Cold weather concreting admixtures which are specially formulated to produce high quality concrete mixes at very low temperatures.



Cement Hydration Controlling Admixtures (Hydrocon Range)

Used to keep concrete mixes workable for extended time lasting from 3 hours up to 3 days.

Air-Entrainers (Cemairin Range)

Create highly stable microscopic air bubbles which distribute uniformly in the concrete mix to improve the resistance of concrete mixes against freezing and thawing, severe weathering and de-icing compounds.

Waterproofing Admixtures (Flocrete W Range)

Liquid concrete admixture formulated from selected organic materials specially designed to produce hydrophobic properties when mixed with concrete. These hydrophobic materials repel external water and reduce the permeability of concrete.



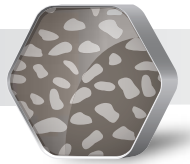
Shrinkage Reducing & Compensating Admixtures (Flocrete SR Range)

Controlling drying shrinkage and reducing the number of harmful cracks.

Corrosion Inhibiting Admixture for Reinforced Concrete (Flocrete CN30)

Concrete Fibers

Products designed to act as secondary reinforcement, reduce the effects of plastic shrinkage, and improve the resistance of concrete.



National Arena - Romania



Otopeni Bridge - Romania



Millennium Center - Bulgaria



Capital Fort - Bulgaria



Tunnel T-48 - India



Kattupalli Shipyard & Captive Port Complex - India



Dubai Towers - Qatar



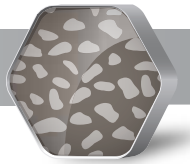
Hamad International Airport - Qatar



KSA

Jeddah (Kingdom) Tower

The one-kilometer tall tower will be a mixed-use building covering an area of 245,000 m² (60.54 ac) and will accommodate the world's highest observatory.



Product Development & Improvement

DCP is dedicated to providing continuous customer service and support throughout every stage of the construction process. The DCP team works hand-in-hand with all parties to ensure all client needs are met without delay.

Our research and development centres work continuously to ensure we are using the latest technology to deliver the best performing & quality products and services to customers.

DCP operations all over the world have highly qualified local sales and technical service teams ready to assist clients.

Concrete labs are set up in every operation to help develop suitable products for the market and to support clients technically in different aspects of concrete mix design.





Don Construction Products Inc.
Headquarters
2826 Lineberger Industrial Dr.
Lancaster, SC 29720
Tel: +1 803 286 5430
Fax: +1 803 286 5432
E-mail: info.usa@dcp-int.com