



Method Statement

Ref. #: DCP10/05-0115-E-2022



Sethard S100

[Easy to Clean Curing Aid for Concrete]



Table of Content

SECTION A: GENERAL COMMENTS	3
General Notes	3
High-Temperature Working	3
Low-Temperature Working	3
Tools and Equipment	4
SECTION B: APPLICATION	5
Substrate Preparation	5
Application	5
Cleaning	6
Remarks	6
SECTION C: CAUTIONS	7
Health & Safety	7
SECTION D: APPROVAL AND VARIATIONS	7



Section A: General Comments

General Notes:

The information below is a detailed overview of the application of DCP's **Sethard S100** curing aid system and should be read in conjunction with the relevant technical data sheet prior to application. All DCP Products should be applied by experienced specialist contractors.

All the points below assume the correct preparation of the relevant surface.

High-Temperature Working:

Application temperature ranges from 5°C and 50°C. However, it is suggested that, for temperatures above 35°C, the following guidelines are adopted as good working practice:

- i. Unmixed materials and equipment should be stored in a cool shaded area and away from direct sunlight.
- ii. Avoid application during the peak temperature of the day.
- iii. Plan for enough materials, tools, and labor to ensure a continuous applicant process.

Low-Temperature Working:

It is suggested that, for temperatures below 10°C, the following guidelines are adopted as good working practice:

- i. Unmixed materials should be stored at room temperature.
- ii. Cold temperatures will affect the properties of the material.
- iii. Do not apply under rain or snow, and avoid dew point conditions during application.
- iv. Avoid applying the product if the temperature is around 5 and falling.

Tools and Equipment:

It is suggested that the following list of equipment are adopted as a minimum requirement

- | | | |
|----------------------------|-------|---|
| <i>Personal protection</i> | : | <i>Protective overalls</i> |
| | : | <i>Goggles or a face mask</i> |
| | : | <i>Good quality gloves</i> |
| | : | <i>Safety shoes</i> |
| | : | <i>Safety helmet</i> |
|
<i>Equipment</i> |
: |
<i>Low pressure sprayer (Fig.1)</i> |
| | : | <i>Spray nozzle (Fig.2)</i> |
| | : | <i>Wide soft push broom (Fig.3)</i> |



*Fig.1: Low pressure sprayer
(Only for clear Sethard S100)*



*Fig.2: Spray nozzle
(Only for clear Sethard S100)*



Fig.3: Wide soft push broom

Section B: Application

1.0 Substrate Preparation

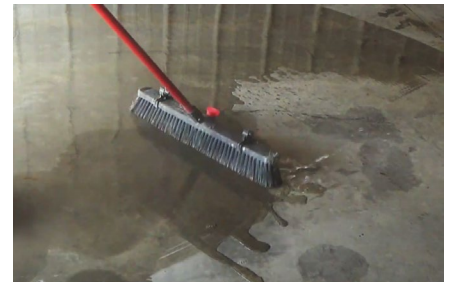
- 1.1 No special surface preparation is required
- 1.2 Ensure that the substrate is free from any oil or dust.
- 1.3 For Vertical Surfaces , Sethard S 100 should be applied directly after formwork de-shuttering
- 1.4 For Horizontal Surfaces (such as slabs), Sethard S 100 should be applied after concrete has set, which varies depending on temperature, for reference Sethard S100 can be applied as soon as the slab can receive foot traffic that leave no leaves no footprints over the surface and bleeding water is not present.

2.0 Application

Note: Make sure to mix Sethard S100 White well before use to achieve a homogeneous mix.

2.1 For Concrete Floors

- 2.1.1 Apply one coat of **Sethard S100** at the rate of 4 - 7 m²/litre using a broom, brush or roller without producing puddles.
- 2.1.2 In case of broom application, use a soft bristle broom and evenly spread **Sethard S100** and ensure uniform wetting.
- 2.1.3 Care must be taken to spread the material well to have a uniform and consistent application.
- 2.1.4 After the application is complete, the surface can be used for further construction works as soon as it is dry to the touch.
- 2.1.5 For subsequent paints or coverings over Sethard S100, allow 3 – 7 days of drying time depending on ambient temperatures.



Notes:

- Coverage may vary with the application method, surface conditions, and porosity.
- Low-pressure sprayer with spray nozzle may be used for clear Sethard S100, but not for Sethard S100 White. If spray application is used, the spray nozzle should be approximately 450 mm from concrete surfaces and passed back and forth to ensure complete coverage.



2.2 For Concrete Vertical Elements

2.2.1 **Sethard S100** can be applied directly after de-shuttering.

2.2.2 Apply **Sethard S100** to the surface of the wall using a low-pressure sprayer or roller. If spray application is used, the spray nozzle should be approximately 450 mm from concrete surfaces and passed back and forth to ensure complete coverage.

Note: Spray application is only suitable when using clear Sethard S100.

2.2.3 The recommended coverage rate should be around 4 – 7 m²/litre per coat. Pump pressure should be maintained all the time to give even, fine spray. Coverage may vary depending on the surface conditions, and porosity.

2.2.4 Start at the top and work your way down along the wall or vertical surface.

2.2.5 Apply sufficient material to thoroughly wet the surface without allowing excessive amounts to run down the wall.

2.2.6 For subsequent paints or coverings over Sethard S100, allow 3 – 7 days of drying time depending on ambient temperatures.



1.0 Cleaning

1.1 All tools should be cleaned immediately after finishing using clean water.

2.0 Remarks

2.1 Check the substrate in advance. Ensure that the substrate is in good condition and clean.

2.2 Do not use airless sprayers for application, only low-pressure sprayers.

2.3 Saw cutting may be done before or after **Sethard S100** is applied, depending on the immediate need for curing; It is critical that the dust or slurry from cutting be immediately and thoroughly removed from the slab.

2.4 Avoid contact with glass, aluminum, or other glazed or finished surfaces. Where contact occurs, immediately wipe the surface with a damp cloth or flush with water.

2.5 When applying near windows, mask the glass.

2.6 **Sethard S100** is not a surface retarder. Do not apply during the final troweling operations as discoloration may occur.

2.7 **Sethard S100** should not be applied onto frozen substrates or if the ambient temperature is around 5°C and falling.

2.8 If pigment settlement is noted in **Sethard S100 White**, mix the material well before use, to ensure a homogenous mix.

2.9 If required, Mock-up/Trial application shall be done at the site to understand the actual coverage of different concrete surfaces.



Section C: Cautions

Health and safety

Sethard S100 should not come into contact with skin and eyes. However, any accidental splashes to the eyes must be rinsed with clean water and seek medical advice.

Fire:

Sethard S100 is nonflammable.

For further information on refer to the Material Safety Data Sheet.

Section D : Approval and Variations

This method statement is offered by DCP as a 'standard proposal' for the application of **Sethard S100**. It remains the responsibility of the Engineer to determine the correct method for any given application. Where alternative methods are to be used, these must be submitted to DCP for approval, in writing, prior to commencement of any work. DCP will not accept responsibility or liability for variations to the above method statement under any other condition.