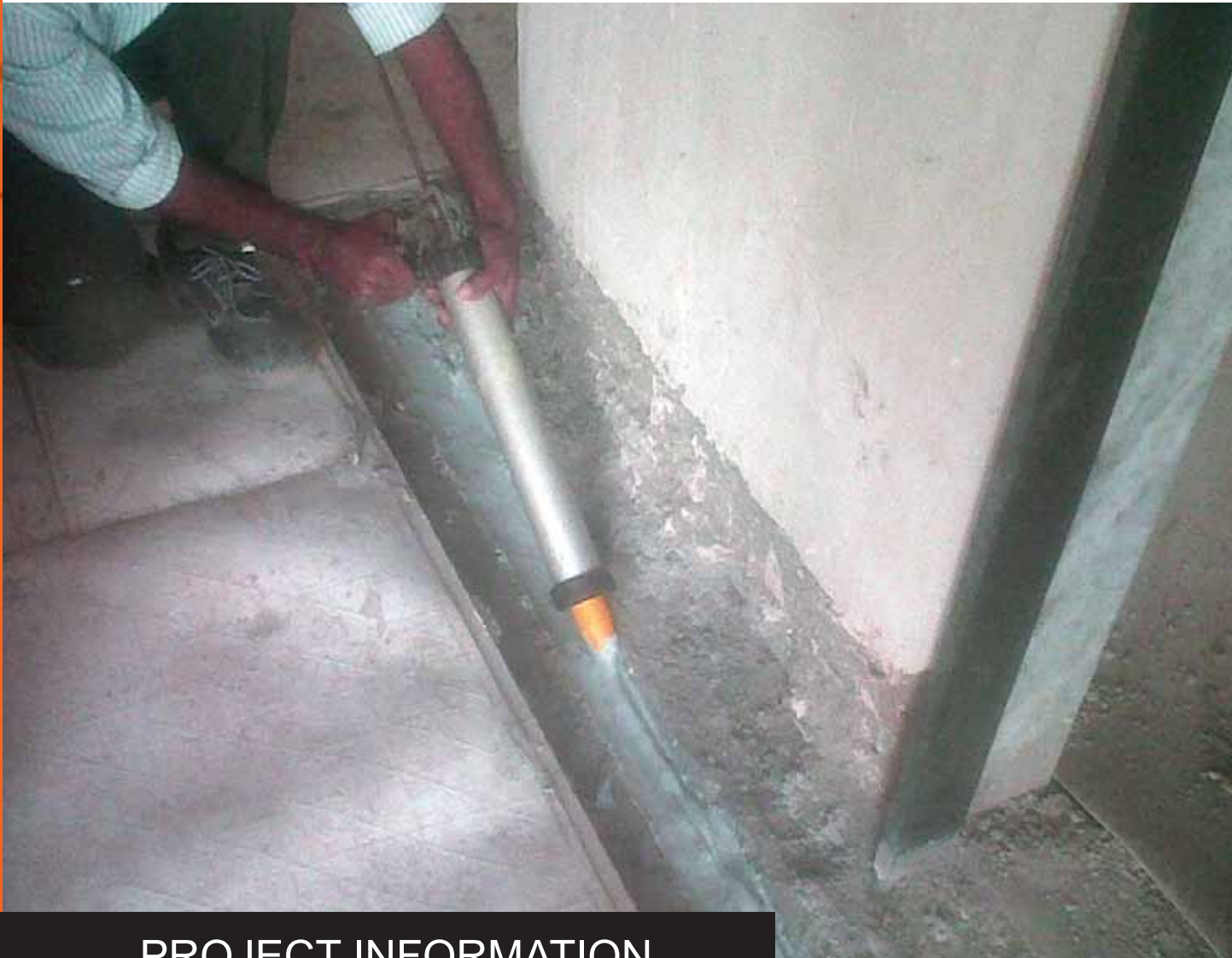


Case Study



PROJECT INFORMATION

Project name: Dheeraj Realty, Jade Residences - Wagholi

Client: Dheeraj Realty, BKC, Mumbai

Consultant: Bein Consultants

Contractors: M/s Creative Concept, Mumbai

Location: Wagholi ,Maharashtra

www.dcp-int.com



expertise



quality



full range



PROJECT REQUIREMENT

Task at Hand

Dheeraj Realty is a well-known and reputed group from the Mumbai realty market. They were constructing a premium residential project in Wagholi. They have kept expansion joints as per the advice of the structural project consultants. The expansion joints were available in both internal flat areas and external areas between the extension of buildings and on terraces. Dheeraj was going for a conventional system for treating expansion joints but due to the limitations, rigidity and poor durability of conventional systems there was a failure in earlier treated joints in previous projects and those joints were leaking and causing further prolonged issues of waterproofing. DCP was contacted to offer a products system solution for their internal and external expansion joint areas.

Area Covered

500 RMT of expansion joint, both internal and external.

DCP SOLUTION

For treating the external, horizontal expansion joints of 50 mm, the width-to-depth ratio of 2:1 was maintained. For 50 mm joint width, the depth was maintained up to 25 mm. The DCP team suggested the use of a polystyrene backer rod or single component waterproof polyurethane foam as a supporting material. Next, the team suggested priming the joint area with polysulphide primer **PS100**, filling the entire joint with pourable grade polysulphide sealant **Flexseal PS660**, and then covering the entire joint with polyolefin joint tape system Hydroseal FS that is placed uniformly over the joint and then fixed using thixotropic adhesive **Quickmast 341** to cover the joint permanently.

For treating the internal horizontal expansion joint of 50 mm, the DCP team wanted to maintain the width-to-depth ration of 2:1. For 50 mm joint width, the depth was maintained up to 25 mm. The team suggested using a polystyrene backer rod or single component waterproof polyurethane foam as supporting material. Next, it was suggested filling the entire joint with **Flexseal PU440**, a single component flexible polyurethane sealant by using a caulking gun, then covering the entire joint with self adhesive butyl tape placed uniformly over the joint and then fixing it uniformly by pressing all over the joint area.

Products and Quantities Supplied

Flexseal PU440	840 sausages of 600 ml each
Flexseal T240 NT	440 RMT
Flexseal PS100	7 ltr
Flexseal PS660	Pourable Grade 50 ltr
Hydroseal FS	60 RMT
Quickmast 341	50 kg

Supply Period

October to November, 2014



www.dcp-int.com