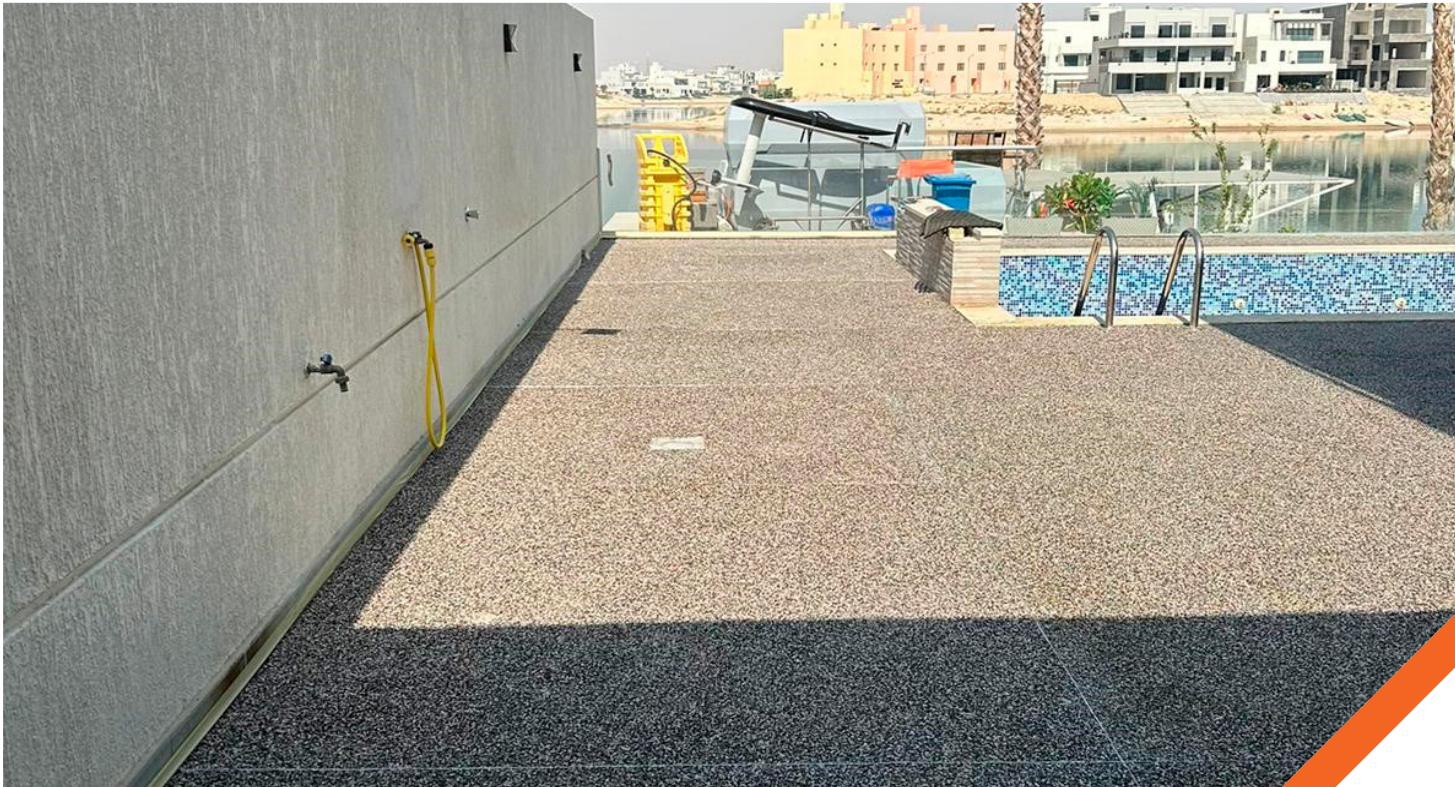


Case Study

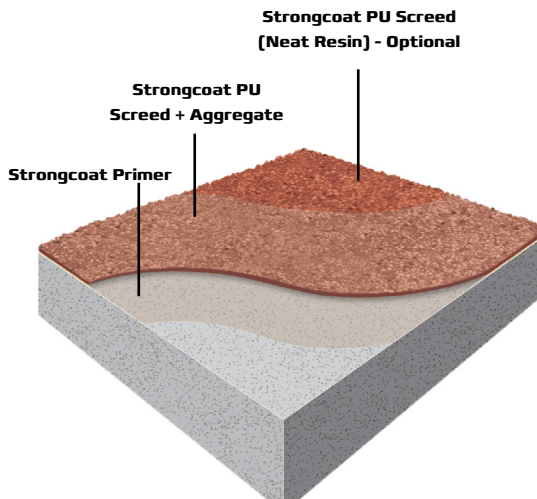


- » Project name **Al Khiran Private Chalet**
- » Contractor **Al Hadaf International Company**
- » Location **Al Khiran City, Kuwait**
- » Products used **Strongcoat Primer**
Strongcoat PU Screed
Flo-Grout 2
Quickmast 341

Project requirements

The owner of Al Khiran Private Chalet, which is a private sea-side chalet located at Al Khiran City, Kuwait, was aiming to renovate the already tiled pool surrounding area of 200 square meters with a durable, low maintenance, UV resistant, flooring system to be applied on top of ceramic tiles providing a natural aesthetic appearance for the floor.

DCP Solution



Strongcoat PU Screed

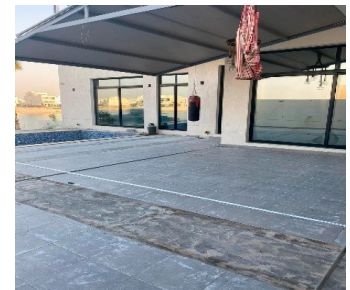
DCP offered a unique flooring solution that uses a polyurethane-based matrix to bind aggregates. This system provides a variety of finishes, determined by the type, color, size of aggregates, and their ratio with the resin.

Our solution, the **Strongcoat PU Screed** flooring system, is a high-quality option that successfully met the client's needs. Crafted with a two-part, high-density polyurethane resin, it ensures durability and top-notch quality. What sets it apart is its on-site customization, allowing for a perfect blend with a diverse selection of decorative aggregates.

Strongcoat PU Screed comprises a primer coat of Strongcoat primer; an epoxy based primer for floorings and coatings, to provide better adhesion, **Strongcoat PU Screed** resin mixed with the chosen aggregates, and **Strongcoat PU Screed** neat resin used as a sealer coat to protect and seal the surfaces.

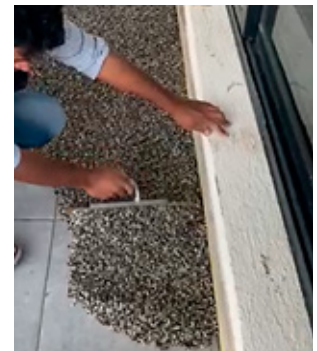
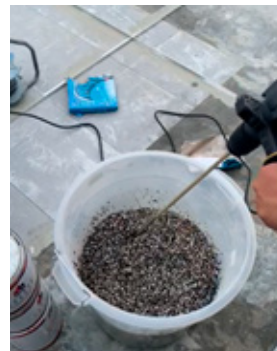
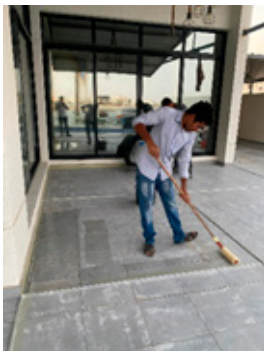
With its countless design options and infinite customization possibilities, this elegant and timeless flooring finish gave the floor the necessary beautiful, natural appearance.

Strongcoat PU Screed system was applied over the existing tiles, eliminating the need to strip out the previous tiles system. Tile surfaces were cleaned and prepared to receive the **Strongcoat PU Screed**, damaged tiles were removed and the gaps were filled with DCP's high quality cementitious grout **Flo-Grout 2**, irregularities and cracks were repaired using DCP's **Quickmast 341** epoxy paste before applying the **Strongcoat PU Screed**.



The substrate was first primed with **Strongcoat Primer**; afterward, **Strongcoat PU Screed** resin was mixed and prepared to be then mixed with the chosen aggregates. Once mixing was complete, mixed **Strongcoat PU Screed** was transferred to the primed surface at the desired thickness.

After application and depending on the aggregate size and shape and the needed surface finish, a hand trowel was used to provide a more compacted and levelled surface.



DCP Solution

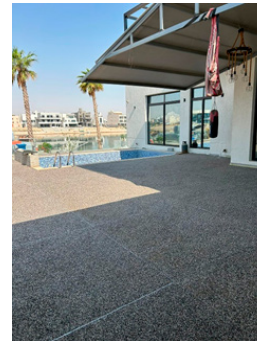
A sealer coat of **Strongcoat PU Screed** was applied for complete protection of the porous surface. The primary benefit of this kind of flooring system is its lower maintenance expenses, as it eliminates the need for replacement or re-application of the whole system due to frequent use.



Before-After Images



Before



After

